

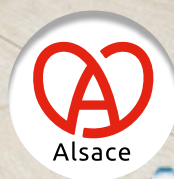
# ALSAFLOOR

## BÂTON ROMPU

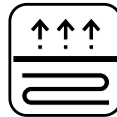
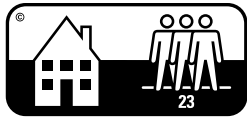
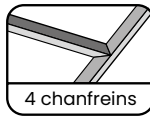
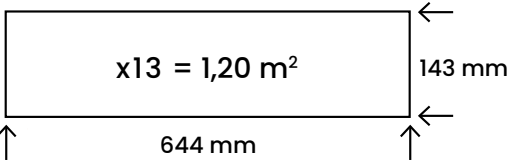
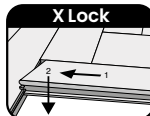


**Water resistant\***

\* Résistant à l'eau. Pas de changement d'apparence et gonflement  $\leq 0,2$  mm. Test réalisé selon le protocole NALFA et la norme ISO 4760.



**FR** Revêtement de sol stratifié **EN** Laminate flooring **ES** Suelo laminado **DE** Laminatefußboden **RU** Ламинат **TR** Laminat parke **IT** Pavimento laminato **PT** Pavimentos estratificados **GR** Συνθετικό πάτωμα συνθετικό **PL** Panele podłogowe laminowane **CH** 强化木地板



<b>CE</b>	
Alsaflooring, ZI 1 rue de l'Europe, 67520 MARLENHEIM 22	
EN 14041 Revêtements de sols stratifiés pour usage intérieur Sol stratifié BÂTON ROMPU	
<ul style="list-style-type: none"> <li>• Réaction au feu</li> <li>• Emission de formaldéhyde</li> <li>• Glissance</li> <li>• Conductivité thermique</li> </ul>	<ul style="list-style-type: none"> <li>Cfl-S1</li> <li>E1</li> <li>DS</li> <li><math>\leq 0,15</math> m<sup>2</sup>K/W</li> </ul>
N° de DoP : 002-20/RPC/2022	
Disponible sur <a href="http://www.alsaflooring.com">www.alsaflooring.com</a>	



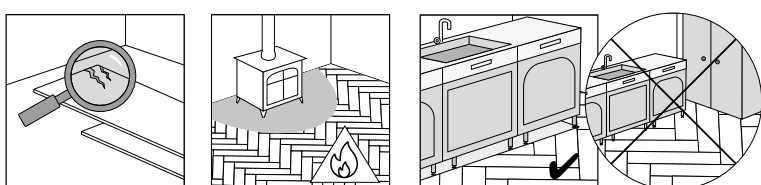
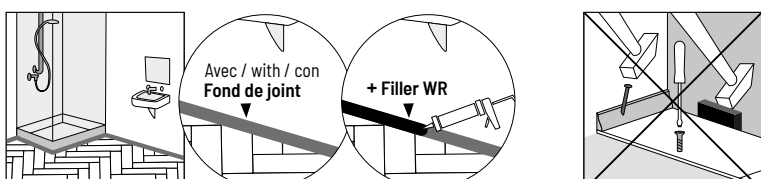
\*Information sur le niveau d'émission de substances volatiles dans l'air intérieur, présentant un risque de toxicité par inhalation, sur une échelle de classe allant de A+ (très faibles émissions) à C (fortes émissions).

UNE MARQUE **ALSA FLOORING**

**FR** Instructions de pose au dos **EN** See the back side for laying instructions **ES** Instrucciones de instalación al dorso **DE** Verlegehinweise **RU** Инструкция в другой стороне **TR** Açıklamalar sayfanın arka yüzündedir **IT** Istruzioni sul retro **PT** Instruções de assentamento no verso **GR** Οδηγίες χρήσης στην πίσω πλευρά **PL** Instrukcja montażu na odwrocie **CH** 请参见背面安装说明

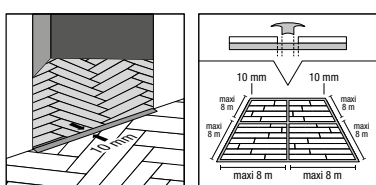
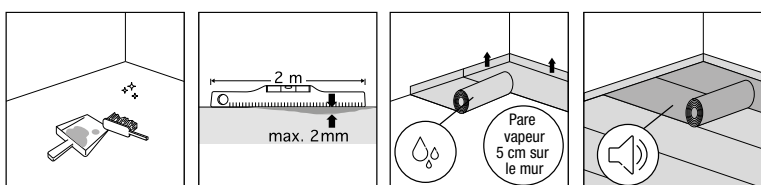
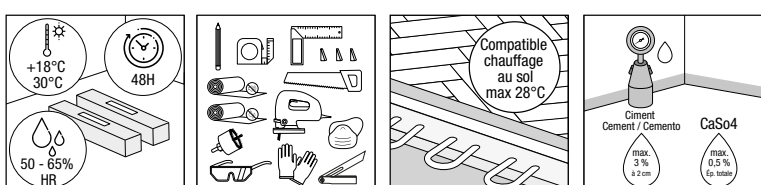


# BÂTON ROMPU



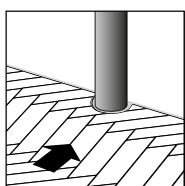
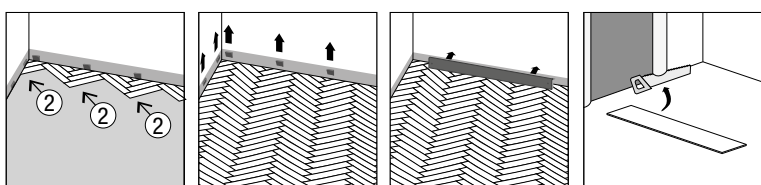
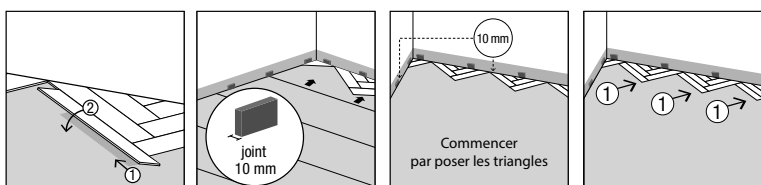
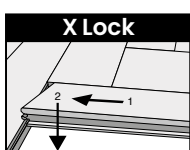
## Préparation

**EN** Before laying **ES** Antes de colocar **DE** Vor dem verlegen **RU** Подготовка **TR** Hazırlık  
**IT** Prima della posa **PT** Preparação **GR** τοποθέτηση **PL** Przygotowanie **CH** 准备工作



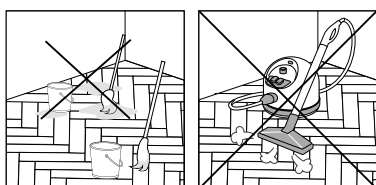
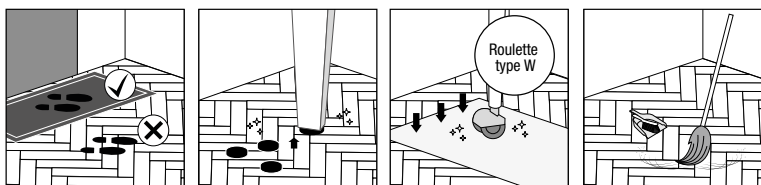
## Instructions de pose

**EN** Laying instructions **ES** Instrucciones de instalación  
**DE** Verlegeanleitung **RU** Инструкция по укладке **TR** Montaj Talimatları  
**IT** Istruzioni di posa **PT** Instruções de aplicação **GR** Ενδοδαπέδια θερμοάντληση **PL** Instrukcja montażu **CH** 安装说明



## Entretien

**EN** Flooring maintenance **ES** Mantenimiento  
**DE** Pflege **RU** Уход за ламинатом **TR** Kullanma talimatı  
**IT** Pulizia **PT** Limpeza **GR** Συντήρηση **PL** Konserwacja **CH** 保养



## Conditions de garantie sur

**EN** Warranty conditions on **ES** Condiciones de garantía  
**DE** Garantiebedingungen **RU** Условия гарантии на сайте  
**TR** Garanti şartları (burabadir) **IT** Condizioni di garanzia PT Condições de garantia em **GR** Εγγύηση **PL** Warunki gwarancji na **CH** 质保条款请参见

[www.alsaflooring.com](http://www.alsaflooring.com)

# ALSAFLOOR